



CERVIA

 Mt 3 x 9



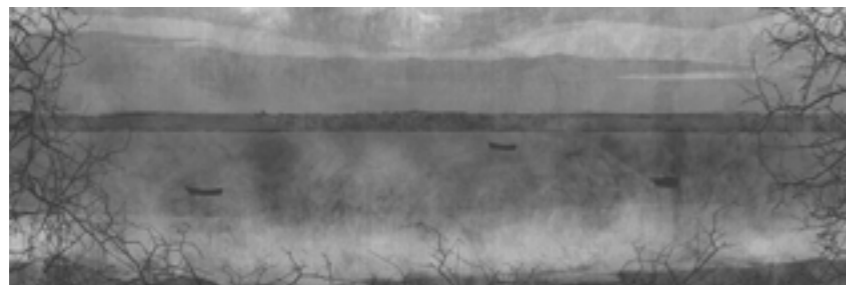
KW023_06_01



KW023_06_02



KW023_06_03



KW023_06_03





Mt 3x9

CASANOVA



KW022_09_01



KW022_09_02



CANAZEI

Mt 3x5



KW023_11_01



KW023_11_02



KW023_11_03



KW023_11_04



Mt 3 x 4,5

LINEA SOTTILE



KW023_45_01



KW023_45_02



KW023_45_03



Mt 3 x 9

IL GIARDINO DEL RE



KW023_10_01



KW023_10_02



KW023_10_03



Mt 3x9

VERNAZZA



KW023_42_01



KW023_42_02



MIGRA

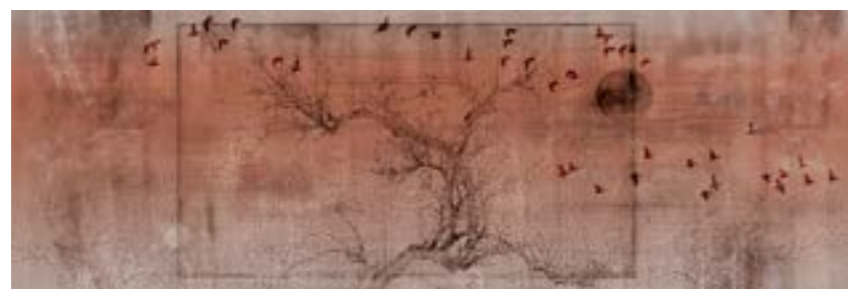
 Mt 3x9



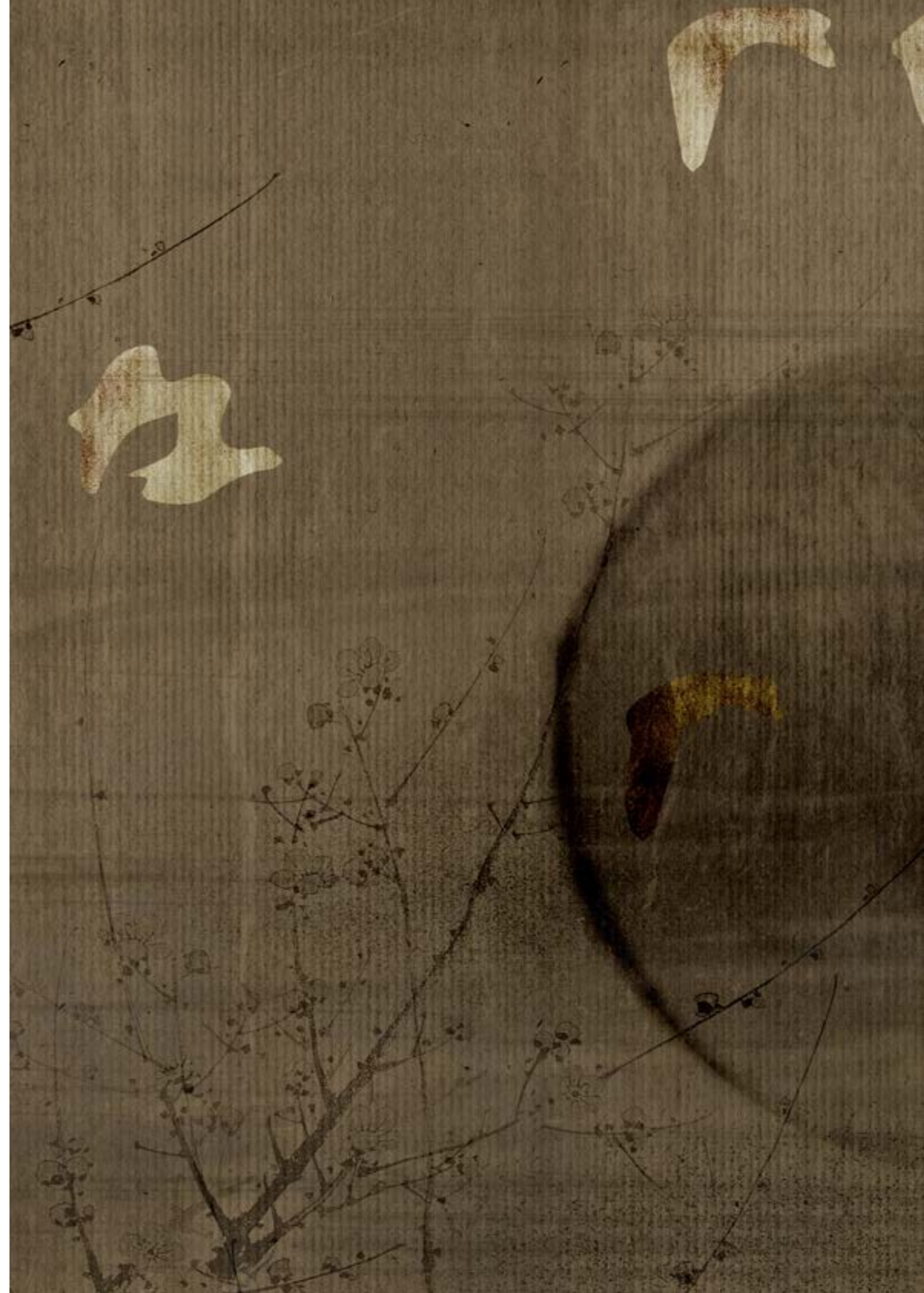
KW023_39_01



KW023_39_02



KW023_39_03





Mt 3x9

SAN MARTINO



KW023_36_01



KW023_36_02



KW023_36_03



GIARDINO DI NINFA

Mt 3x9



KW023_40_01



KW023_40_02



KW023_40_03





NAVALIA

L'occhio del tempo sbircia attraverso diversi cantieri di
alfieri importanti come Rossi o Sottsass.
L'opera non è soltanto l'oggetto, ma anche tutto ciò
che lo circonda.

*The eye of time peeks through several construction sites of
important standard bearers such as Rossi or Sottsass.
The work is not only the object, but also everything that
surrounds it.*



MORFEO

 Mt 3 x 9



KW023_14_01



KW023_14_02



BUONGIORNO MILANO

Mt 3 x 9



KW023_49_01



KW023_49_02



KW023_49_03





SOCIAL FACTORY

Mt 3 x 9



KW023_48_01



KW023_48_02



KW023_48_03



OH, LA VITA

Una passeggiata tra campi fioriti, foreste selvagge,
spiagge incantevoli e tramonti mozzafiato,
capace di donare molto di più di ciò che si sta cercando.

*A walk through flowering fields, wild forests,
enchanted beaches and breathtaking sunsets,
capable of giving much more than what is being sought.*



ISTANTE

 Mt 3x9



KW023_05_01



KW023_05_02



KW023_05_03



TALISA

 Mt 3x9



KW023_13_01



KW023_13_02



KW023_13_03



AMERINDA

 Mt 3 x 9



KW023_21_01



KW023_21_02



KW023_21_03



KW023_21_04





Mt 3x6

AURA



KW023_15_01



KW023_15_02



KW023_15_03



GUAZZO

Mt 3x9



KW023_28_01



KW023_28_02



FOSSILIA

 Mt 3 x 9



KW023_25_01



KW023_25_02



KW023_25_03



KW023_25_04



Mt 3x9

FAUNO



KW023_07_01



KW023_07_02



KW023_07_03



KW023_07_04



AMBROSIA

Mt 3x8



KW023_61_01



KW023_61_02



MESSAPIA

 Mt 3 x 9



KW023_23_01



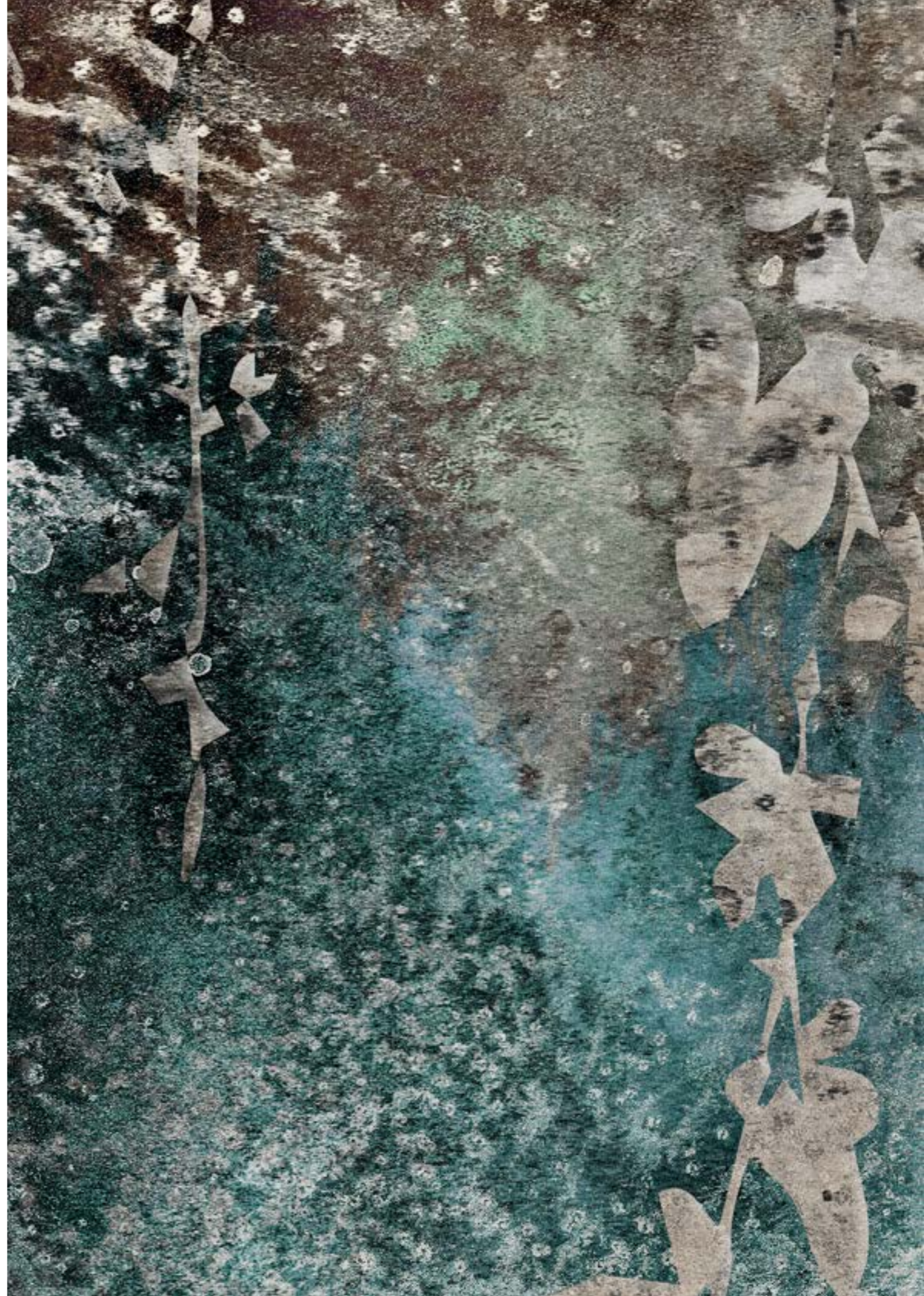
KW023_23_02



KW023_23_03



KW023_23_04





LA FIORITA

Mt 3x6



KW023_43_01



KW023_43_02



KW023_43_03



Mt 3x9

PENSIERO STUPENDO



KW023_26_01



KW023_26_02



KW023_26_03



VERSAILLES

Mt 3x6



KW023_47_01



KW023_47_02



KW023_47_03



POMONA

Mt 3x9



KW023_22_01



KW023_22_02



KW023_22_03



CLORI

Mt 3 x 3



KW023_37_01



KW023_37_02



KW023_37_03



KW023_37_04



DAISY

Mt 3 x 3



KW023_41_01



KW023_41_02



KW023_41_03



KW023_41_04



KW023_41_05



KW023_41_06



SIGILLUM

 Mt 3x6



KW023_55_01



KW023_55_02





PARADISO INFERNALE

 Mt 3x6




KW023_54_01



KW023_54_02



AFRODITE

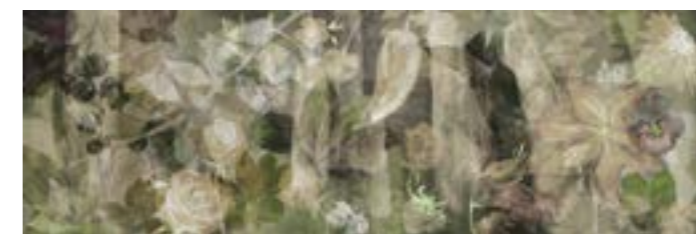
 Mt 3x9



KW023_52_01



KW023_52_02



KW023_52_03



Mt 3x9

FORTUNA



KW023_17_01



KW023_17_02



KW023_17_03



KW023_17_04



AMORE PURO

Mt 3x9



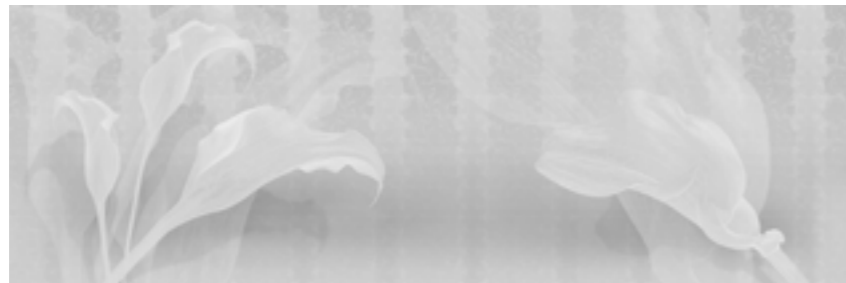
KW023_16_01



KW023_16_02



KW023_16_03



KW023_16_04



FLORENTIA

Mt 3x9



KW023_58_01



KW023_58_02



KW023_58_03



THE ITALIAN JOB

In cucina il vero buono è il bello puro.
Un omaggio a Depero, in salsa artistica.

*In the kitchen, the real good is pure beauty.
A tribute to Depero, in an artistic sauce.*



RIGATONI

 Mt 3x3



KW023_01_01



KW023_01_02



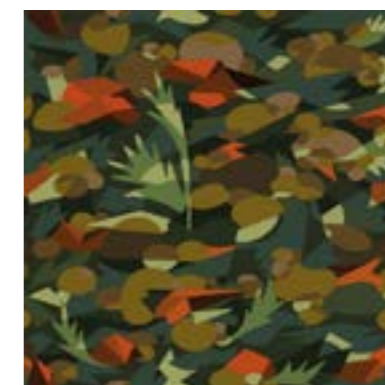
KW023_01_03



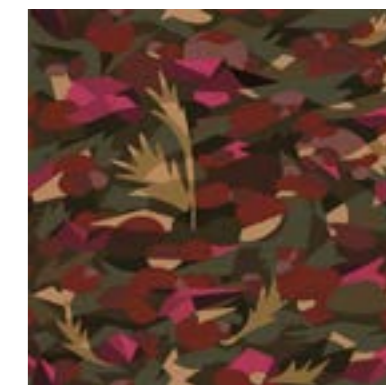


Mt 3x3

MINISTRONE



KW023_03_01



KW023_03_02



KW023_03_03



KW023_03_04



SEPIOLINE

Mt 3x3



KW023_02_01



KW023_02_02



KW023_02_03



KW023_02_04



TROUSSE

Mt 3 x 9



KW023_44_01



KW023_44_02



KW023_44_03



BRONZAGE

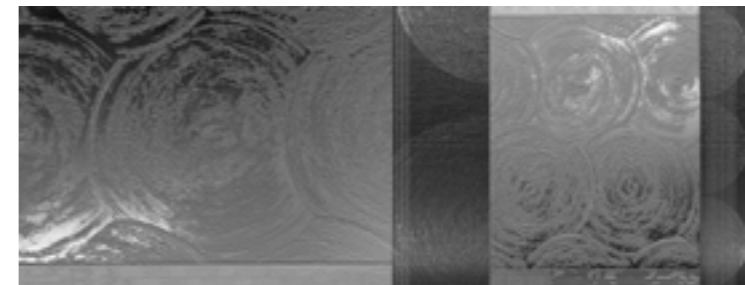
 Mt 3x8



KW023_08_01



KW023_04_02



KW023_04_03



MARRAS

 Mt 3x9



KW023_31_01



KW023_31_02



KW023_31_03





BLU DI GENOVA

 Mt 3x6



KW023_29_01



KW023_29_02



KW023_29_03



MEMENTO

 Mt 3x5



KW023_51_01



KW023_51_02



KW023_51_03



KW023_51_04



Mt 3x6

STRATUS



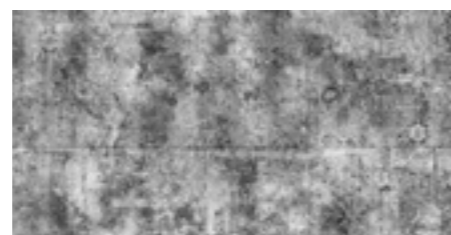
KW023_53_01



KW023_53_02



KW023_53_03



KW023_53_04



MAGGESE

Mt 3x6



KW023_46_01



KW023_46_02

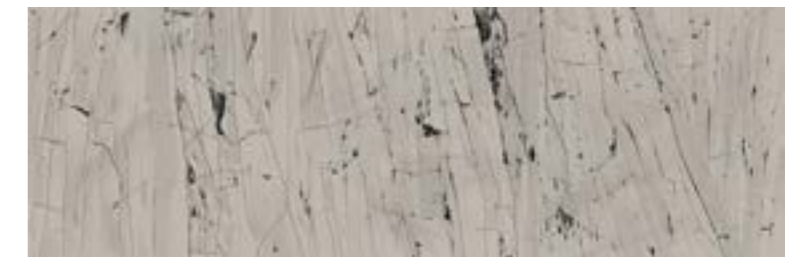


KW023_46_03

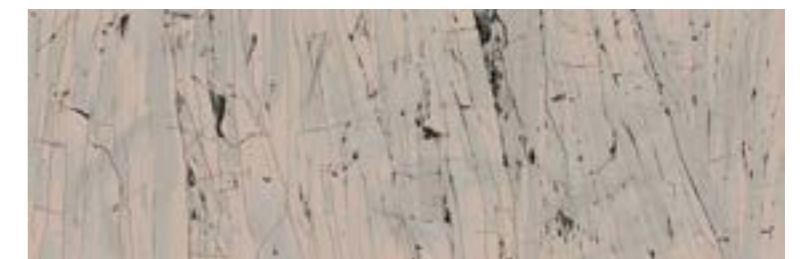


Mt 3x9

CARRARA



KW023_12_01



KW023_12_02



KW023_12_03



ATUJ

 Mt 3 x 6



KW023_30_01



KW023_30_02



KW023_30_03



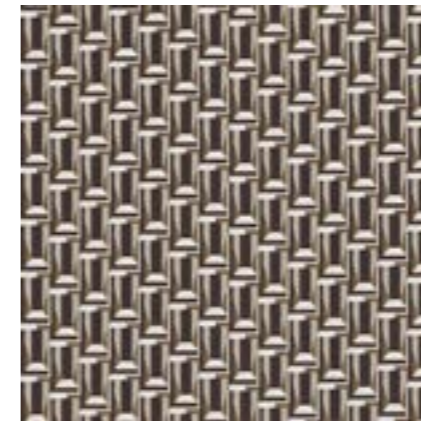
KW023_30_04



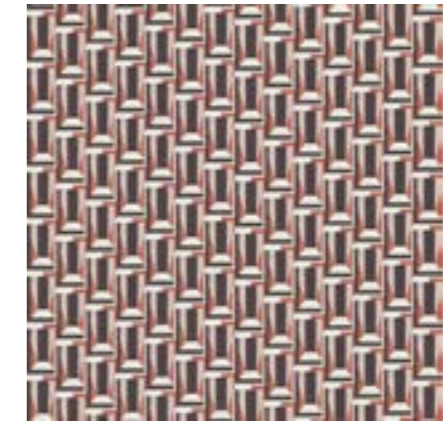


Mt 3x3

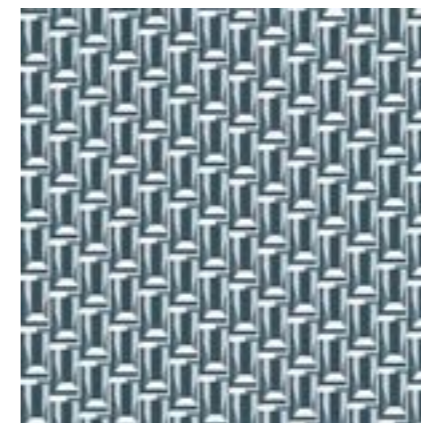
RUBIK



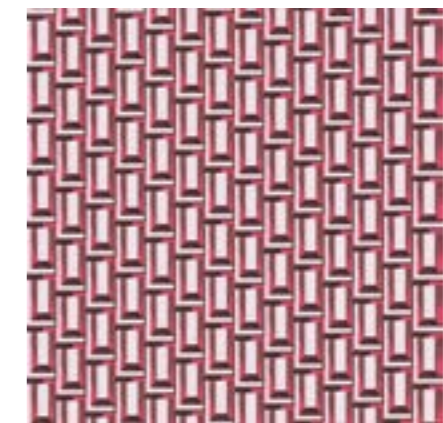
KW023_20_01



KW023_20_02



KW023_20_03



KW023_20_04



ISTINTO PRIMORDIALE

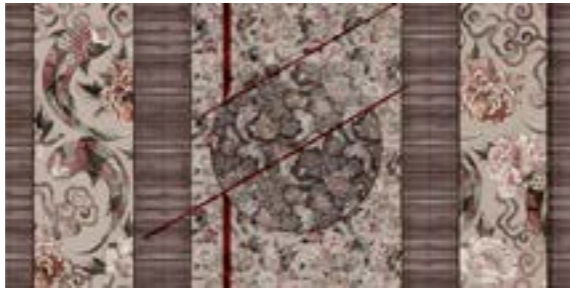
Alla ricerca di nuovi mondi da esplorare, passando per tutto ciò che si conosce anche senza saperlo.

Looking for new worlds to explore, going through everything you know even without knowing it.

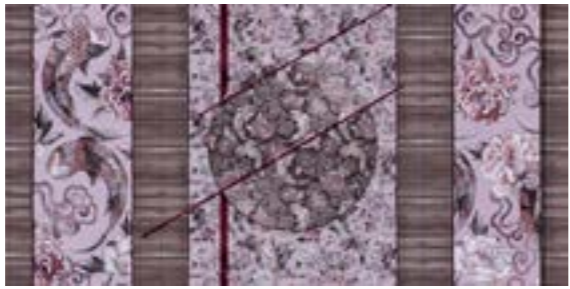


KOI

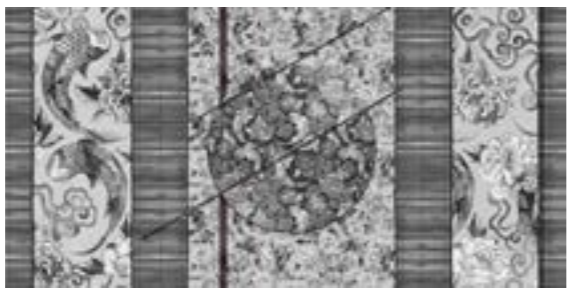
 Mt 3x6



KW023_38_01



KW023_38_02



KW023_38_03



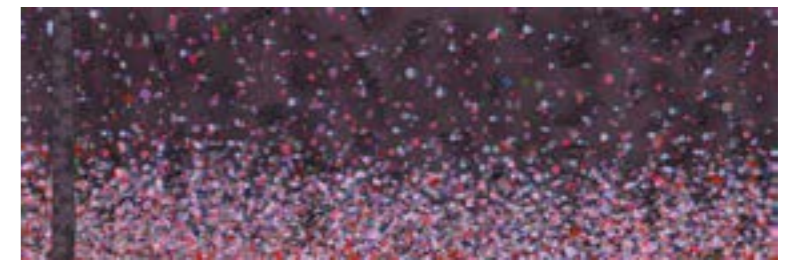


Mt 3x9

ARLECCHINO



KW023_27_01



KW023_27_02



KW023_27_03



KW023_27_04



EUCLIDE

 Mt 3x9



KW023_18_01



KW023_18_02



KW023_18_03



CROCHET

 Mt 3x5,5



KW023_57_01



KW023_57_02



Mt 3x9

ABACUS



KW023_32_01



KW023_32_02



KW023_32_03



KW023_32_04



REBECCA

 Mt 3x9



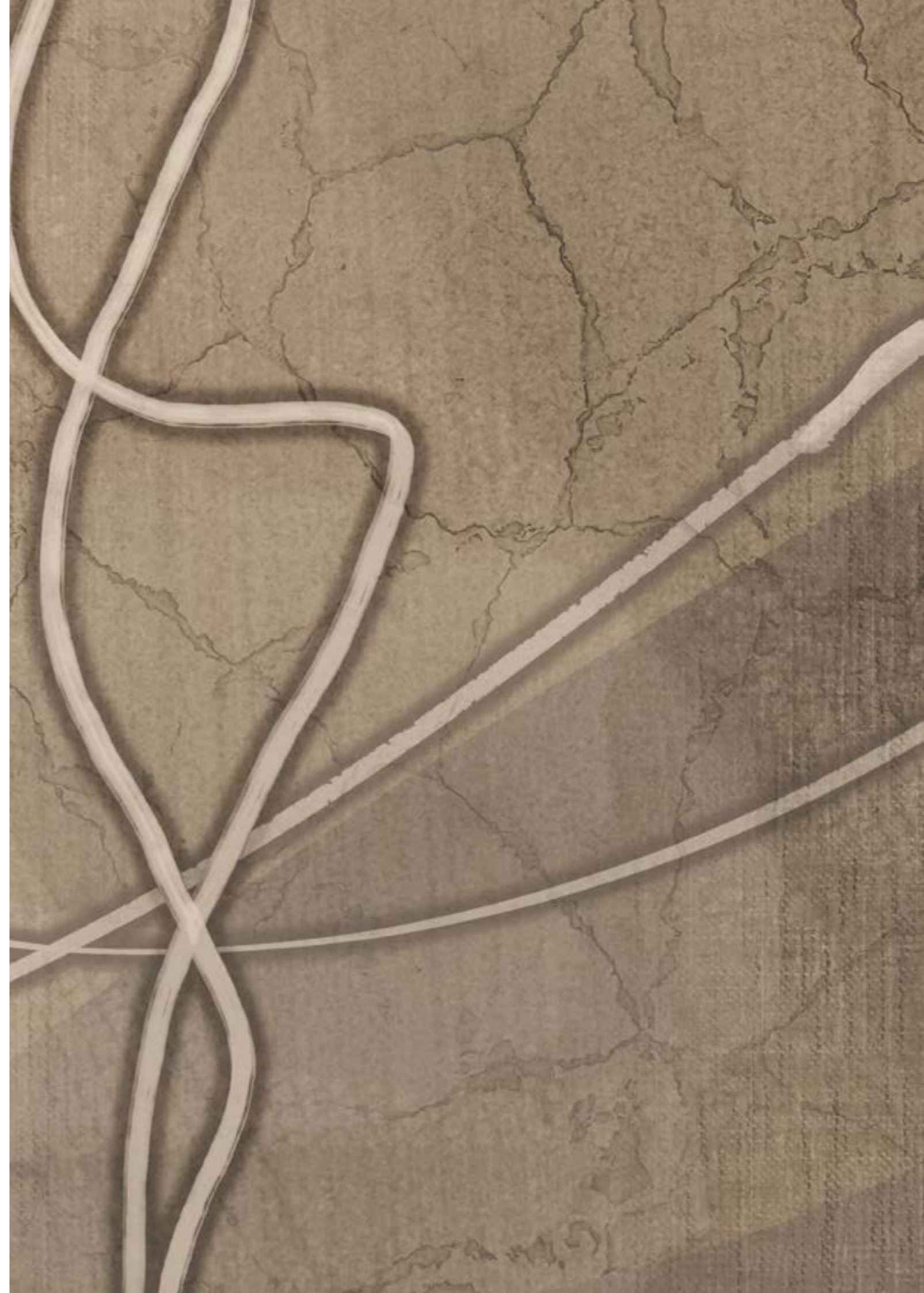
KW023_35_01



KW023_35_02



KW023_35_03





LONG

 Mt 3 x 6



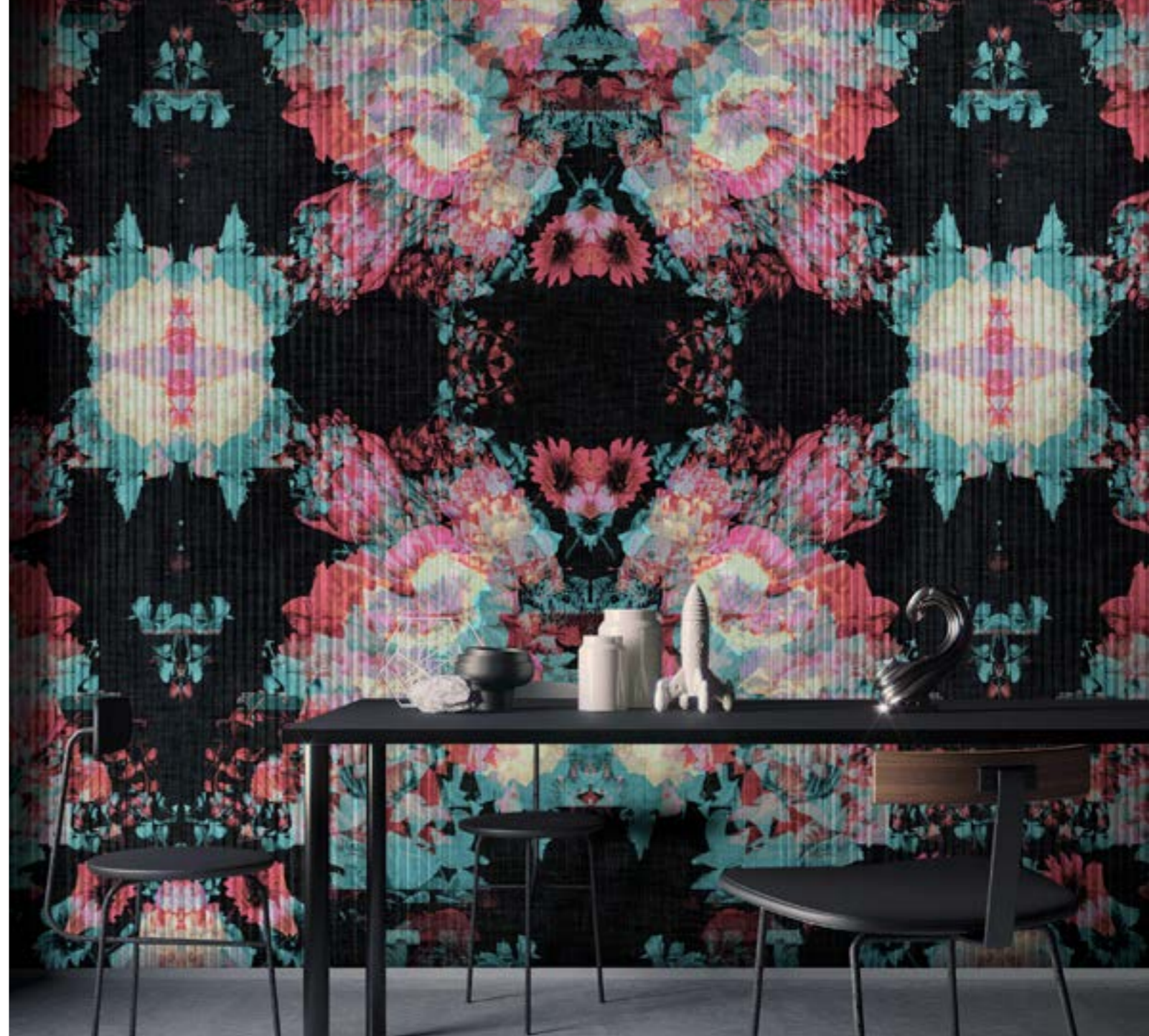
KW023_34_01



KW023_34_02



KW023_34_03



RORSHACK

 Mt 3 x 2



KW023_33_01



KW023_33_02



KW023_33_03



SHOCKING

 Mt 3x9



KW023_19_01



KW023_19_02



KW023_19_03



PIOGGIA NEL PINETO

 Mt 3x9



KW023_04_01



KW023_04_02



KW023_04_03



SORRENTO

Mt 3x5



KW023_62_01



KW023_62_02



KW023_62_03



Mt 3x5

POSITANO



KW023_63_01



KW023_63_02



KW023_63_03



VIRTUAL TOUR

La bussola punta verso il futuro, in mezzo la storia dell'arte.

*The compass points towards the future, in the midst of the
history of art.*



BOTANY

Mt 3 x 9



KW023_50_01



KW023_50_02



KW023_50_03



GUERRILLA ART

Mt 3 x 9



KW023_24_01



KW023_24_02



KW023_24_03



BACCO

 Mt 3x9



KW023_60_01



KW023_60_02



LUCE DIVINA

 Mt 3x9




KW023_59_01



KW023_59_02



SER

 Mt 3x9



KW023_56_01



KW023_56_02